

## Slide-Out Type Range Hood | A70



Online Warranty Registration



Please read these instructions and warranty information carefully before use and keep them handy for future reference.

# USER MANUAL

請即進行保用登記！  
有關保用條款細則，請看說明書最後一頁。

---

Please register your warranty information now !  
For Warranty Terms & Conditions,  
please refer to the last page of this user manual.

# Content

---

Warnings & Safety Precautions	04
Installation Instructions	06
Operation Instructions	09
Care & Maintenance	10
Technical Specification	12
Warranty Terms & Conditions	23

# Warnings & Safety Precautions

---

## **WARNING!**

- Read all instructions carefully before using this product.
- This product is for domestic indoor use only. If this product is used for any commercial, industrial, rental or other purposes, product warranty will be VOIDED.
- This product is not intended for use by children or persons with reduced physical, sensory or mental capabilities, or lack of experience and knowledge, unless they have been given supervision or instruction concerning use of this product by an adult responsible for their safety.
- Mind your children and DO NOT let children play with this product.
- Cleaning and user maintenance shall not be made by children without supervision.
- Check the voltage indicated on the rating label before using this product.
- If the supply cord is damaged, it must be replaced by the manufacturer, its service agent or similarly qualified persons in order to avoid hazards.
- Unplug this product from the power source before cleaning and maintenance.
- Contact German Pool authorized service technician for repair or maintenance of this product.

The Instructions for Use apply to several versions of this appliance. Accordingly, you may find descriptions of individual features that do not apply to your specific appliance.

## **INSTALLATION**

1. The manufacturer will not be held liable for any damages resulting from incorrect or improper installation.
2. The minimum safety distance between the cooker top and the extractor hood is 650 mm (some models can be installed at a lower height, please refer to the paragraphs on working dimensions and installation).
3. Check that the mains voltage corresponds to that indicated on the rating plate fixed to the inside of the hood.
4. For Class I appliances, check that the domestic power supply guarantees adequate earthing
5. Connect the extractor to the exhaust flue through a pipe of minimum diameter  $\varnothing 125/5''$  ,  $\varnothing 152/6''$  . The route of the flue must be as short as possible.
6. DO NOT connect the extractor hood to exhaust ducts carrying combustion fumes (boilers, fireplaces, etc.).
7. If the extractor is used in conjunction with non-electrical appliances (e.g. gas burning appliances), a sufficient degree of aeration must be guaranteed in the room in order to prevent the backflow of exhaust gas. The kitchen must have an opening communicating directly with the open air in order to guarantee the entry of clean air. When the cooker hood is used in conjunction with appliances supplied with energy other than electric, the negative pressure in the room must not exceed 0,04 mbar to prevent fumes being drawn back into the room by the cooker hood.
8. In the event of damage to the power cable, it must be replaced by the manufacturer or by the technical service department, in order to prevent any risks.

# Warnings & Safety Precautions

---

9. If the instructions for installation for the gas hob specify a greater distance specified above, this has to be taken into account. Regulations concerning the discharge of air have to be fulfilled.
10. Use only screws and small parts in support of the hood.
11. **⚠ WARNING!** Failure to install the screws or fixing device in accordance with these instructions may result in electrical hazards.
12. Connect the hood to the mains through a two-pole switch having a contact gap of at least 3 mm.

## USE

1. The extractor hood has been designed exclusively for domestic use to eliminate kitchen smells.
2. Never use the hood for purposes other than for which it has been designed.
3. Never leave high naked flames under the hood when it is in operation.
4. Adjust the flame intensity to direct it onto the bottom of the pan only, making sure that it does not engulf the sides.
5. Deep fat fryers must be continuously monitored during use: overheated oil can burst into flames.
6. Do not flambè under the range hood; risk of fire.
7. This appliance can be used by children aged from 8 years and above and persons with reduced physical, sensory or mental capabilities or lack of experience and knowledge if they have been given supervision or instruction concerning use of the appliance in a safe way and understand the hazards involved. Children shall not play with the appliance. Cleaning and user maintenance shall not be made by children without supervision.
8. **⚠ CAUTION!** Accessible parts may become hot when used with cooking appliances.

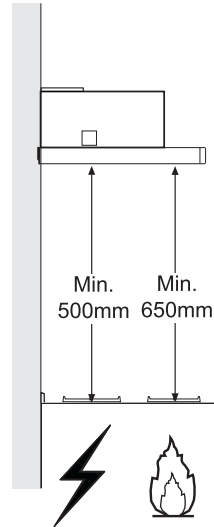
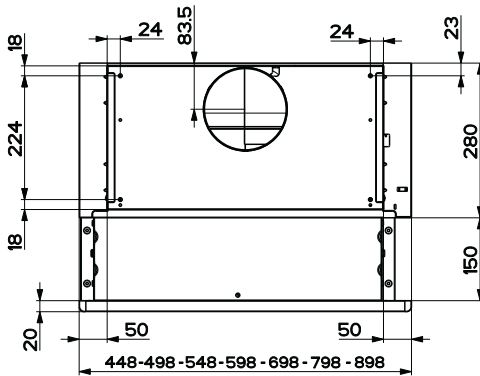
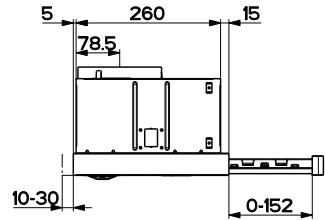
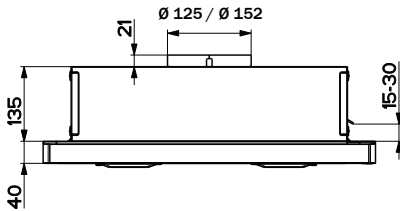
## MAINTENANCE

1. Switch off or unplug the appliance from the mains supply before carrying out any maintenance work.
2. Clean and/or replace the Filters after the specified time period (Fire hazard).
3. The Grease filters must be cleaned every 2 months of operation, or more frequently for particularly heavy usage, and can be washed in a dishwasher.
4. The Activated charcoal filter is not washable and cannot be regenerated, and must be replaced approximately every 4 months of operation, or more frequently for particularly heavy usage.
5. Clean the hood using a damp cloth and a neutral liquid detergent.
6. Please wear safety gloves for installation, cleaning, light bulb changing and dismantling in order to prevent injuries.

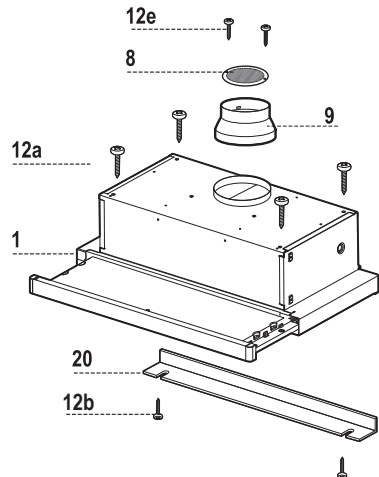


The symbol on the product or on its packaging indicates that this product may not be treated as household waste. Instead it shall be handed over to the applicable collection point for the recycling of electrical and electronic equipment. By ensuring this product is disposed of correctly, you will help prevent potential negative consequences for the environment and human health, which could otherwise be caused by inappropriate waste handling of this product. For more detailed information about recycling of this product, please contact your local city office, your household waste disposal service or the shop where you purchased the product.

# Installation Instructions



Components		
Ref.	Qty.	Product Components / Installation Components
1	1	Hood Body, complete with: Controls, Light, Blower, Filters
8	1	Directional Air Outlet grille
9	1	Reducer Flange Ø 125 / Ø 152
20	1	Closing element
12a	4	Screws 4.2 x 44.4
12b	2	Screws 4.2 x 12.7
12c	2	Screws 2.9 x 9.5

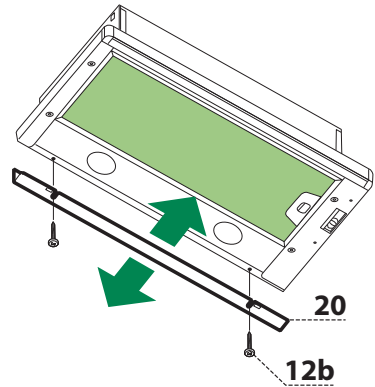




# Installation Instructions

## Closing Element

The space between the edge of the hood and the rear wall can be closed by applying the element 20 provided, using the screws 12b.

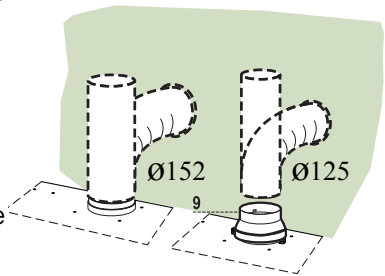


## Connections

### Ducted Version Air Exhaust System

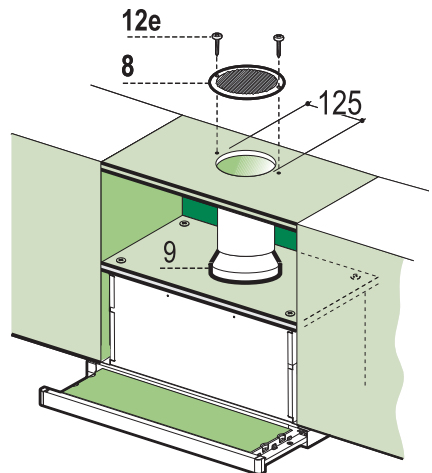
When installing the ducted version, connect the hood to the chimney using either a flexible or rigid pipe  $\varnothing$  152mm or  $\varnothing$ 125 mm, the choice of which is left to the installer.

1. To install a  $\varnothing$  125 mm air exhaust connection, insert the reducer flange 9 on the hood body outlet.
2. Fix the pipe in position using sufficient pipe clamps (not supplied).
3. Remove possible charcoal filters.



### Recirculation Version Air Outlet

1. Cut a hole  $\varnothing$  125 mm in any shelf that may be positioned over the hood.
2. Insert the reducer flange 9 on the hood body outlet.
3. Connect the flange to the outlet on the shelf over the hood by using a flexible or rigid pipe  $\varnothing$ 125 mm.
4. Fix the pipe in position using sufficient pipe clamps (not supplied).
5. Fix the air outlet grid 8 on the recirculation air outlet by using the 2 screws 12e (2,9 x 9,5) provided.
6. Ensure that the activated charcoal filters have been inserted.

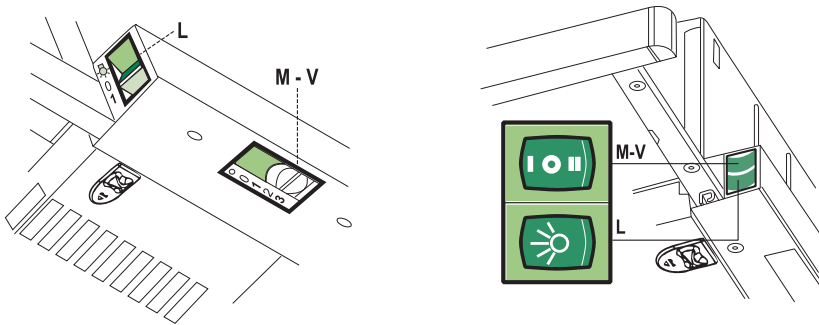


# Installation Instructions

## Electrical Connection

1. Connect the hood to the mains through a two-pole switch having a contact gap of at least 3 mm.
2. When opening the sliding carriage for the first time after installing the hood, pull it out briskly until it clicks.

## Operation Instructions

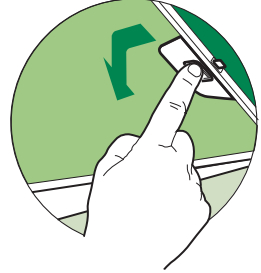


L	Light	Switches the lighting system on and off.	L	Light	Switches the lighting system on and off.
M	Motor	Switches the extractor motor on and off.	M	Motor	Switches the extractor motor on and off.
V	Speed	Sets the operating speed of the extractor: <ol style="list-style-type: none"> <li>1. Low speed, used for a continuous and silent air change in the presence of light cooking vapour.</li> <li>2. Medium speed, suitable for most operating conditions given the optimum treated air flow/noise level ratio.</li> <li>3. Maximum speed, used for eliminating the highest cooking vapour emission, including long periods.</li> </ol>	V	Speed	Sets the operating speed of the extractor: <ol style="list-style-type: none"> <li>1. Low speed, used for a continuous and silent air change in the presence of light cooking vapour.</li> <li>2. Medium speed, suitable for most operating conditions given the optimum treated air flow/noise level ratio.</li> </ol>

# Cleaning & Maintenance

## Cleaning Metal Cassette Grease Filters

1. The filters must be cleaned every 2 months, or more frequently in case of particularly heavy use of the hood. Filters can be washed in a dishwasher.
2. Pull out the sliding suction panel.
3. Remove the filters one by one, after having disconnected the relative fastening elements.
4. Wash the filters, taking care not to bend them. Let them get dry before refitting them. (The colour of the filter surface may change throughout the time but this has no influence to the filter efficiency).
5. When refitting the filters, make sure that the handle is visible on the outside.
6. Close the sliding suction panel.

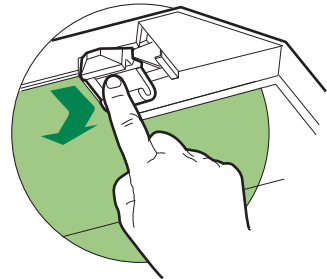


## Replacing Charcoal Filters

### ⚠ WARNING!

Turn the lights off and wait until the lamps cool down before you change the odour filter.

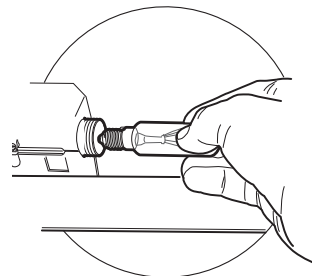
1. These filters are not washable and cannot be regenerated, and must be replaced approximately every four months or more frequently by particularly heavy use.
2. Pull out the sliding suction panel.
3. Remove the grease filters.
4. Remove the saturated carbon filter by releasing the fixing hooks.
5. Fit the new filter by hooking it into its seating.
6. Replace the grease filters.
7. Close the sliding suction panel.



## Light Replacement







28W-40W light.

1. Remove the metal grease filters.
2. Unscrew the bulbs and replace them with new ones having the same characteristics.
3. Replace the metal grease filters.



# Cleaning & Maintenance

---

Lamp	Power (W)	Socket	Voltage (V)	Dimension (mm)	ILCOS Code
	28	E14	220-240	104 x 35	HSGSB/C/UB-28-220/240-E14
	20	G4	12	33 x 9	HSG/C/UB-20-12-G4
	35	GU10	230	51 x 50.7	HAGS-35-230-GU10-51/40
	50	GU10	230	51 x 50.7	HAGS-35-230-GU10-51/20
	20	GU4	12	40 x 35	HRGS-20-12-GU4-35/30
	20	GU5.3	12	46 x 51	HRGS-20-12-GU5.3-50/10
	16	G13	95	720 x 26	FD-16/40/1B-E-G13-26/720
	18	G13	57	589.8 x 26	FD-18/40/1B-E-G13-26/600
	9	G23	60 (lamp) 220-240 (starter)	167 x 28	FSD-9/27/1B-I-G23
	11	G23	91 (lamp) 220-240 (starter)	235.8 x 28	FSD-11/40/1B-I-G23

# Technical Specification

---

<b>Model</b>	<b>A70</b>
Voltage / Frequency	220-240V / 50Hz
Power (Max)	181 W
Lighting	28 W*2
Exhaust Outlet	125/5", 152/6" (mm/inch)
Exhaust Flow	705 m <sup>3</sup> /h
Product Dimensions	(H) 175 mm (W) 700 mm (D) 280 mm
Net Weight	8.1 kg

- Specification is subject to change without prior notice.
- If there is any inconsistency or ambiguity between the English version and the Chinese version, the English version shall prevail.
- Refer to [www.germanpool.com](http://www.germanpool.com) for the most update version of the user manual.

# 目錄

---

警告及注意事項

14

安裝說明

16

使用說明

19

清潔與維護

20

技術規格

22

保用條款

23

# 警告及注意事項

## ⚠ 警告！

- 使用本產品前，請仔細閱讀所有說明。
- 本產品只限家居室內日常使用，如產品作任何商業、工業、出租或其他用途，保用證即告失效。
- 請勿讓兒童或身體有殘障、精神不健全及對本產品缺乏經驗或知識的人士單獨使用本產品；如需使用，必須要在負責任的成年人監管下方可使用。
- 應照顧好兒童，確保他們不會玩耍本產品。
- 無成年人監管下，勿讓兒童清潔及維護本產品。
- 使用前，請先檢查所有電壓是否與本產品標籤上的電壓相符。
- 如果電源線損壞，為免發生意外，電源線必須由廠方、廠方指定的維修中心或同等合格的技術人員進行更換。
- 清潔或檢查本產品前，必須先關機及拔掉插頭。
- 請聯繫德國寶授權的技術人員進行維修或保養本產品。

本使用說明書適用於本系列的多款型號，因此，當中可能包含與您所購買機型不相符的功能描述。

## 安裝


1. 製造商不對因安裝不當或錯誤安裝所導致的任何損壞負責。
2. 爐具與抽油煙機底部之間的最小安全距離為650毫米（某些型號可安裝於較低位置，請參閱「安裝說明」部份）。
3. 檢查電源電壓是否與機身上的銘牌所標示的額定電壓相符。
4. 對於I類電器，請確保家庭電力系統具備良好接地。
5. 將抽油煙機以直徑 $\varnothing$ 125mm/5吋或 $\varnothing$ 152mm/6吋的排氣管連接至排氣通道，並盡量縮短排氣管路線。
6. 嚴禁將抽油煙機連接至輸送燃燒廢氣（如鍋爐、壁爐等）的排氣管道。
7. 若抽油煙機與非電力設備（如燃氣爐）同時使用，廚房內必須保持足夠的通風，以防止廢氣倒流。廚房應設有與戶外直接連通的開口，以確保新鮮空氣進入。當抽油煙機與使用非電能的設備同時運作時，室內負壓不可超過0.04mbar，以免廢氣被抽回室內。
8. 若電源線損壞，必須由製造商或授權技術服務部門更換，以防止危險發生。
9. 若燃氣爐的安裝說明要求高於上述的安全距離，應以燃氣爐的要求為準。排氣方式必須符合相關法規。
10. 僅使用隨機附送的螺絲及零件以支撐機體。
11. ⚠ 警告！未依照說明安裝固定裝置或螺絲，可能導致觸電危險。
12. 抽油煙機必須連接至具至少3mm斷開距離的雙極開關之電源系統。

## 使用

1. 抽油煙機僅設計用於家用廚房，以去除烹飪時產生的氣味。
2. 嚴禁將本產品用於任何非本機設計用途。
3. 當抽油煙機運作時，嚴禁在其下方在無鍋具的情況下點燃明火。

# 警告及注意事項

---

4. 調整火焰時應只覆蓋鍋底，避免火焰延至鍋邊。
5. 使用油炸鍋時，必須全程監控，以防過熱油脂起火。
6. 嚴禁在抽油煙機下方點燃酒精或易燃物，以免發生火災。
7. 本產品可由8歲或以上兒童及感官或精神有缺陷的人士使用，前提是必須有對其安全負責的人進行監管，並確保使用者的安全及其已獲得有關安全使用的指導，明白當中潛在危險。當兒童對本產品進行清潔和維護時，必須有對其安全負責的人進行監管。兒童嚴禁玩耍本產品。
8.  **警告！**與烹飪設備同時使用時，本產品可接觸部分可能會變熱。

## 保養與清潔

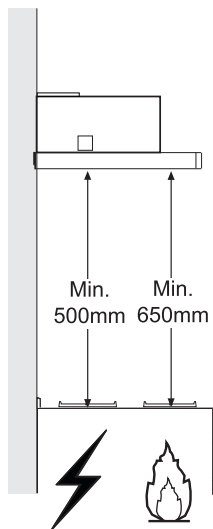
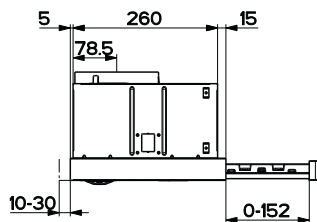
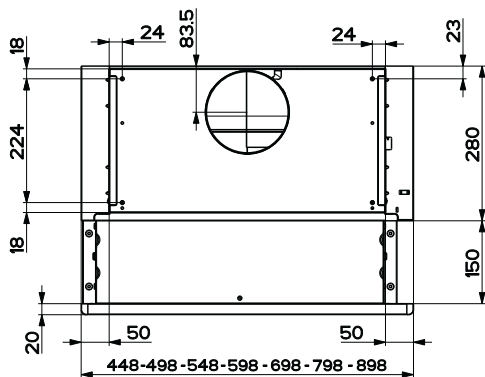
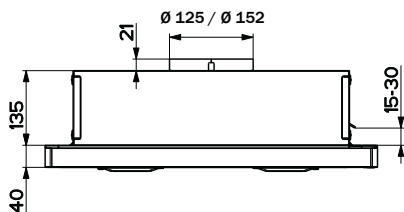
1. 在進行任何維護或清潔工作前，請先關閉電源或拔掉插頭。
2. 請依建議時間清潔或更換濾網（否則可能引發火災危險）。
3. 油脂過濾網應每2個月清洗一次，若使用頻繁則需更頻密清洗，可放入洗碗機清洗。
4. 活性炭過濾網不可清洗或竹循環再用，建議約每4個月更換一次，或視乎使用頻率而定。
5. 清潔機身時，請使用濕布配合中性清潔劑。
6. 安裝、清潔、更換燈泡及拆除抽油煙機時請戴上安全手套，以免受傷。

## 廢棄處理

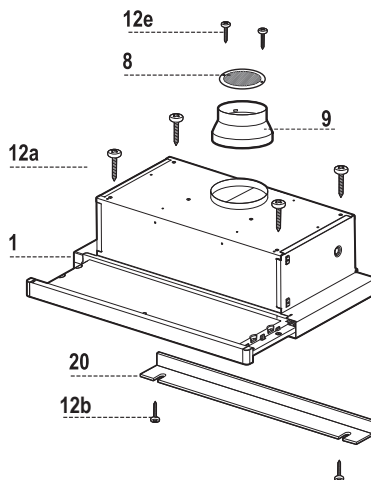


本產品或包裝上標示的符號表示本產品不得作為一般家庭垃圾處理，應交由電氣電子設備回收點。妥善回收有助於防止對環境與人體健康造成潛在危害。如需了解更多有關回收資訊，請聯絡所在地區政府、家庭廢物回收服務部門或購買本產品的商店。

# 安裝說明



組件		
序號	數量	主機組件 / 安裝組件
1	1	機身主體 (含控制面板、照明燈、風機及濾網)
8	1	可調式出風口格柵
9	1	減徑法蘭 Ø125 / Ø152
20	1	封閉元件
12a	4	螺絲 4.2 x 44.4
12b	2	螺絲 4.2 x 12.7
12c	2	螺絲 2.9 x 9.5

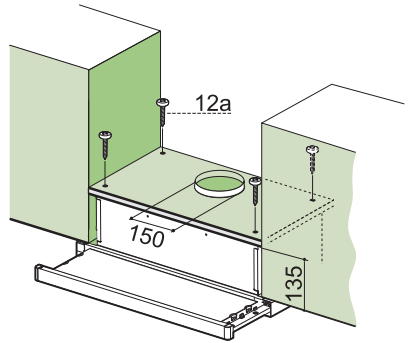


# 安裝說明

## 鑽孔安裝及抽油煙機安裝

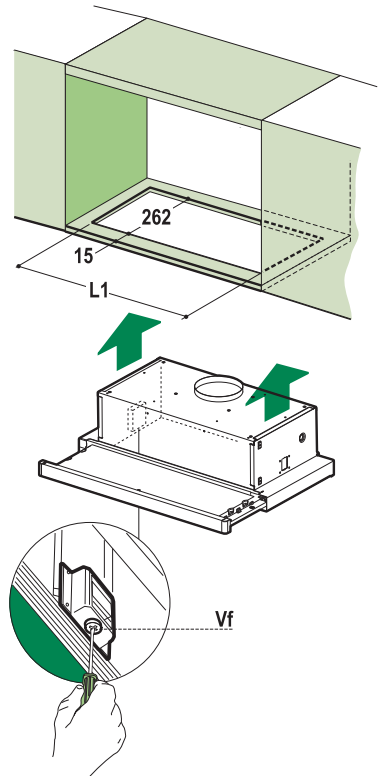
### 螺絲安裝方式

1. 抽油煙機的支撐面必須距離吊櫃底部表面135毫米。
2. 使用隨附的鑽孔模板，並以直徑4.5毫米的鑽頭在支撐面上鑽孔。
3. 依照鑽孔模板，在支撐面上開出直徑150毫米的圓孔。
4. 使用隨附的4枚螺絲12a (4.2 x 44.4) 固定抽油煙機。



### 卡扣安裝方式

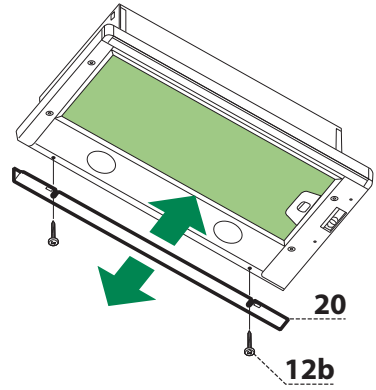
1. 抽油煙機可使用兩側的卡扣支架，直接安裝在吊櫃底部表面。
2. 按圖示在吊櫃底部開出相應尺寸的安裝孔位。
3. 將抽油煙機推入孔內，直至兩側支架「卡」入定位。
4. 從抽油煙機底部擰緊Vf螺絲，鎖定位置。



# 安裝說明

## 封閉元件

可使用隨附的封閉元件20及螺絲12b，將抽油煙機邊緣與後牆之間的空隙封閉。

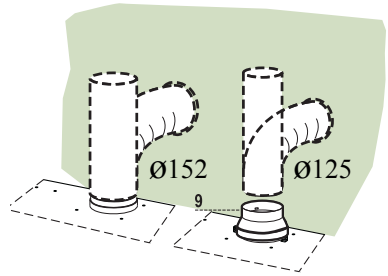


## 連接方式

### 排氣式安裝（外排型）

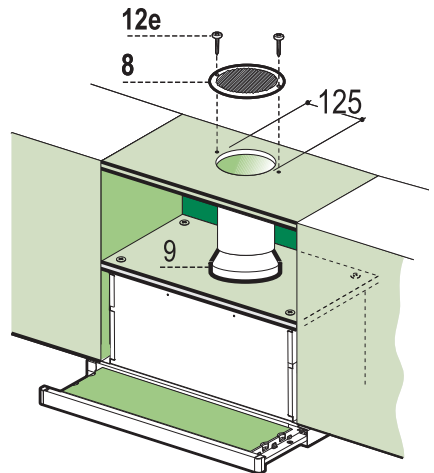
當以外排式安裝時，請使用直徑152毫米或125毫米的軟管或硬管（由安裝人員自行選擇），將抽油煙機與排氣管道連接。

1. 如需使用直徑125毫米的排氣管，請將縮徑法蘭9裝入抽油煙機的排氣口。
2. 使用足夠的管箍（未隨附）固定排氣管位置。
3. 拆除活性碳濾網（如有）。



### 循環式安裝（內循環型）

1. 若抽油煙機上方有層板，請在層板上開出直徑125毫米的孔。
2. 將縮徑法蘭9安裝於抽油煙機的排氣口。
3. 使用直徑125毫米的軟管或硬管，將法蘭與層板上的出風口連接。
4. 使用足夠的管箍（未隨附）固定排氣管位置。
5. 使用隨附的2枚螺絲12e（2.9 x 9.5）將出風格柵8固定於循環出風口上。
6. 確認活性碳濾網已安裝妥當。

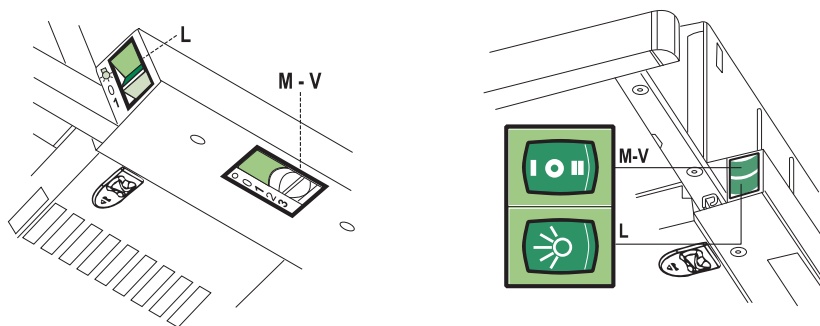


# 安裝說明

## 電源連接

1. 請透過具備最少3毫米接點間距的雙極開關，將抽油煙機接入主電源。
2. 安裝完成後首次開啟滑動面板時，請快速拉出至「喀」一聲，以確保安裝到位。

## 使用說明



L	照明	開關照明系統	L	照明	開關照明系統
M	摩打	開關抽風摩打	M	摩打	開關抽風摩打
V	風速	設定抽油煙機的運行速度： 1. 低速檔：適用於輕度烹飪時，能持續並安靜地進行空氣更換。 2. 中速檔：適用於一般烹飪情況，在風量與噪音之間達至最佳平衡。 3. 高速檔：適用於烹飪煙霧較多或需長時間抽氣的情況，可迅速排走大量油煙。	V	風速	設定抽油煙機的運行速度： 1. 低速檔：適用於輕度烹飪時，能持續而安靜地更換空氣。 2. 中速檔：適用於大多數烹飪情況，提供理想的風量與噪音平衡效果。

# 清潔及維養

---

## 金屬濾油網清潔

1. 濾油網必須每2個月清潔一次，如抽油煙機使用頻繁，需更頻繁清潔。濾網可放入洗碗機清洗。
2. 拉出滑動吸油面板。
3. 拆下濾油網前，先拆除相關固定件，然後逐個取出濾網。
4. 清洗濾網時注意不要折彎，清洗後需完全晾乾再重新安裝。（濾網表面顏色隨時間可能改變，但不影響濾油效果。）
5. 安裝濾網時，確保把手朝外。
6. 關閉滑動吸油面板。

## 活性炭濾網更換

### ⚠ 警告！

更換除味濾網前，請先關閉照明並等待燈泡完全冷卻。







1. 活性炭濾網不可清洗或循環再用，通常需每4個月更換一次，使用頻繁時需更頻繁更換。
2. 拉出滑動吸油面板。
3. 取出濾油網。
4. 釋放固定掛鉤後取出已飽和的活性炭濾網。
5. 將新濾網掛入安裝座。
6. 裝回濾油網。
7. 關閉滑動吸油面板。

## 燈泡更換

請使用28W-40W燈泡。

1. 拆下金屬濾油網。
2. 拆下燈泡，換上相同規格的新燈泡。
3. 裝回金屬濾油網。

# 清潔及維養

燈泡	功率(W)	插座	電壓(V)	尺寸(mm)	ILCOS代碼
	28	E14	220-240	104 x 35	HSGSB/C/UB-28-220/240-E14
	20	G4	12	33 x 9	HSG/C/UB-20-12-G4
	35	GU10	230	51 x 50.7	HAGS-35-230-GU10-51/40
	50	GU10	230	51 x 50.7	HAGS-35-230-GU10-51/20
	20	GU4	12	40 x 35	HRGS-20-12-GU4-35/30
	20	GU5.3	12	46 x 51	HRGS-20-12-GU5.3-50/10
	16	G13	95	720 x 26	FD-16/40/1B-E-G13-26/720
	18	G13	57	589.8 x 26	FD-18/40/1B-E-G13-26/600
	9	G23	60 (燈泡) 220-240 (啟動器)	167 x 28	FSD-9/27/1B-I-G23
	11	G23	60 (燈泡) 220-240 (啟動器)	235.8 x 28	FSD-11/40/1B-I-G23

# 技術規格

---

<b>型號</b>	<b>A70</b>
電壓 / 頻率	220-240V / 50Hz
功率 (最大)	181 W
照明燈	28 W*2
排風口直徑	125/5", 152/6" (mm/inch)
排風量	705 m <sup>3</sup> /hr
機身尺寸	(H) 175 mm (W) 700 mm (D) 280 mm
淨重	8.1 kg

- 產品規格及設計如有變更，恕不另行通知。
- 中英文版本如有出入，一概以英文版為準。
- 本產品使用說明書以[www.germanpool.com](http://www.germanpool.com)網上版為最新版本。

# 保用條款

此保用提供德國寶產品之機件在正常使用下壹年保用(自購買日起計算)。

# Warranty Terms & Conditions

Under normal operations, the product will guarantee a 1-year full warranty provided by German Pool (effective from the date of purchase).

\* 貴戶須在購機十天內，以下列其中一種方式向本公司登記資料，保用手續方正式生效：

- 1) 填妥德國寶VIP手機應用程式保用登記表(掃描右方二維碼)
- 2) 填妥本公司網頁保用登記表  
[www.germanpool.com/warranty](http://www.germanpool.com/warranty)
- 3) 填妥保用卡郵寄至本公司。



\* This warranty is not valid until customer registration information is received by our Service Centre within 10 days of purchase via one of the following means:

- 1) Visit our VIP App and register online:  
(Scan the QR Code on the right)
- 2) Visit our website and register online:  
[www.germanpool.com/warranty](http://www.germanpool.com/warranty)
- 3) Complete the attached Warranty Card and mail it back to our Customer Service Centre.



另請填妥以下表格並與正本發票一併保存，以便維修時核對資料。用戶提供之所有資料必須正確無誤，否則免費保用將會無效。 Please fill out the form below. This information and the original purchase invoice will be required for any repairs. Warranty will be invalidated if information provided is found to be inaccurate.

型號 Model No. : A70

發票號碼 Invoice No. : \_\_\_\_\_ 機身號碼 Serial No. : \_\_\_\_\_

購買商號 Purchased From : \_\_\_\_\_ 購買日期 Purchase Date : \_\_\_\_\_

1. 未能出示購買發票正本者，將不獲免費維修服務。
2. 用戶應依照說明書的指示操作。本保用並不包括：
  - 上門安裝、檢驗、維修或更換零件之人工以及一切運輸費用；
  - 因天然與人為意外造成的損壞(包括運輸及其他)；
  - 電源接合不當、不依說明書而錯誤或疏忽使用本機所引致之損壞。
3. 於下列情況下，用戶之保用資格將被取消：
  - 購買發票有任何非認可之刪改；
  - 產品被用作商業或工業用途；
  - 產品經非認可之技術人員改裝或加裝任何配件；
  - 機身編號被擅自塗改、破壞或刪除。
4. 總代理有權選擇維修或更換配件或其損壞部份。
5. 產品一經被轉讓，其保用即被視作無效。

1. Customer who fails to present original purchase invoice will not be eligible for free warranty service.
2. Customer should always follow the operating instructions. This warranty does not apply to:
  - labour costs for on-site installation, check-up, repair, replacement of parts and other transportation costs;
  - damages caused by accidents of any kind (including material transfer and others);
  - operating failures resulting from applying incorrect voltage, improper usage, and unauthorized installations or repairs.
3. This warranty is invalid if:
  - the purchase invoice is modified by an unauthorized party;
  - the product is used for any commercial or industrial purposes;
  - the product is repaired or modified by unauthorized personnel, or unauthorized parts are installed;
  - the serial number is modified, damaged or removed from the product.
4. German Pool will, at its discretion, repair or replace any defective part.
5. This warranty will be void if there is any transfer of ownership from the original purchaser.

## 客戶服務及維修中心

香港

澳門

九龍大業街59號

澳門青洲大馬路(青洲新路)

三湘九龍灣貨運中心地下B室

515號美居廣場第二期1樓A座

電話：+852 2773 2888

電話：+853 2875 2699

傳真：+852 2356 9798

傳真：+853 2875 2661

電郵：[repairs@germanpool.com](mailto:repairs@germanpool.com)

## Customer Service & Repair Centre

Hong Kong

Macau

Unit B, G/F, Sunshine Kowloon Bay

A, 1 Andar, Mei Kui Kuong Cheong Fase 2.

Cargo Centre, 59 Tai Yip Street,

No.515 Avenida Do Conselheiro Borja

Kowloon, Hong Kong

Macau

Tel : +852 2773 2888

Tel : +853 2875 2699

Fax : +852 2356 9798

Fax : +853 2875 2661

Email : [repairs@germanpool.com](mailto:repairs@germanpool.com)

此保用只適用於香港及澳門

This warranty is valid only in Hong Kong and Macau

# GERMAN POOL

## German Pool (Hong Kong) Limited



香港 (S MARK)  
安全認證



中國電器/康電行業  
十大影響力品牌

CEO

CEO非凡品牌大賞



香港優質商號



香港工商業獎



最具昇管  
創建品牌企業獎



香港中小企業  
最佳拍檔大獎



香港消費者  
推銷品牌



香港 (Q 標)  
優質服務證書



香港名牌十年成就獎  
HONG KONG TOP BRAND TEN YEAR  
ACHIEVEMENT AWARD

© All rights reserved. Copying, reproducing or using the contents of this manual is not allowed without prior authorization from German Pool, violators will be prosecuted.