

安全注意事項

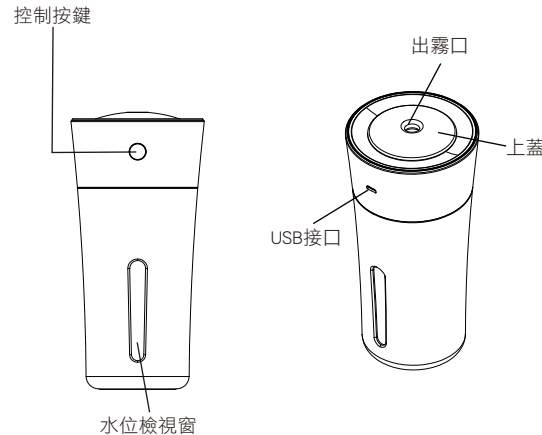


警告!

嚴禁使用消毒液或酒精，長期吸入有機會導致呼吸道灼傷。

1. 使用前必須檢查產品是否有足夠的水，在缺水情況下嚴禁使用加濕功能。
2. 請勿使用油性香薰，以免阻塞出霧口。
3. 本產品運行時，嚴禁以手指或任何物品遮擋出霧口。
4. 本產品不是玩具，必須遠離兒童。
5. 加水或清潔時，必須先拔下電源插頭。
6. 本產品沒有自動斷電功能，當加濕模式到時間後，產品將自動停止加濕，如需繼續使用，必須先加滿水後再重新啟動。

產品結構



使用說明

1. 旋轉取出上蓋，注入清水至最高水位線（建議使用蒸餾水、過濾水或水性香薰，請勿使用自來水、礦泉水或香精油），旋轉裝回上蓋，連接電源。



2. 按「控制按鍵」，循環切換持續加濕模式→間歇加濕模式→關機。

持續加濕模式	持續不斷噴出水霧，預設8小時自動關機。
間歇加濕模式	每隔3秒噴出水霧，預設16小時自動關機。

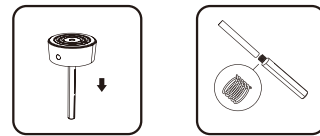
3. 長按「控制按鍵」2秒，可開啟或關閉LED氣氛燈。

清潔與保養

使用本產品一段時間後，如出現不噴出水霧的情況，建議使用棉花棒沾水（或白醋、酒精）擦拭出霧口，抹乾後可正常使用。

更換棉棒

建議每3個月更換一次專用棉棒。拔出棉棒管取出棉棒，更換時請注意底部彈簧，如丟失彈簧會導致本產品無法正常運作。



技術規格

型號	HUM-025
電壓	DC 5V
功率	1.5 W
電流	350 mA
水箱容量	325 ml
噴霧量	24 ml/hr ± 5 ml
產品尺寸	(H) 178 (Φ) 84 mm
淨重	200 g

保用條款

此保用提供德國寶產品之機件在正常使用下壹年保用(自購買日起計算)。

* 客戶須在購機十天內，以下列其中一種方式向本公司登記資料，保用字樣方正式生效：

- 1) 填寫本公司網頁內之保用登記表格
www.germanpool.com/warranty
- 2) 填寫保用登記卡，郵寄至本公司。



Warranty Terms & Conditions

Under normal operations, the product will guarantee a 1-year full warranty provided by German Pool (effective from the date of purchase).

* This warranty is not valid until customer registration information is received by our Service Centre within 10 days of purchase via one of the following means:

- 1) Visit our website and register online:
www.germanpool.com/warranty
- 2) Complete all the fields on the attached Warranty Card and mail it back to our Customer Service Centre.



另請填寫以下表格並與正本發票一併保存，以便維修時核對資料。用戶提供之所有資料必須正確無誤，否則免費保用將會無效。Please fill out the form below. This information and the original purchase invoice will be required for any repairs. Warranty will be invalidated if information provided is found to be inaccurate.

型號 Model No.: HUM-025

機身號碼 Serial No.:

發票號碼 Invoice No.:

購買商號 Purchased From:

購買日期 Purchase Date:

1. 未能出示購買發票正本者，將不獲免費維修服務。
2. 用戶應依照說明書的指示操作。本保用並不包括：
 - 上門安裝、檢驗、維修或更換零件之人工以及一切運輸費用；
 - 因天然與人為意外造成的損壞（包括運輸及其他）；
 - 電源接合不當、不依說明書而錯誤或疏忽使用本機所引致之損壞。
3. 於下列情況下，用戶之保用資格將被取消：
 - 購買發票有任何非認可之刪改；
 - 產品被用作商業或工業用途；
 - 產品經非認可之技術人員改裝或加裝任何配件；
 - 機身編號被擅自塗改、破壞或刪除。
4. 總代理有權選擇維修或更換配件或其損壞部份。
5. 產品一經被轉讓，其保用即被視作無效。

1. Customer who fails to present original purchase invoice will not be eligible for free warranty service.
2. Customer should always follow the operating instructions. This warranty does not apply to:
 - labour costs for on-site installation, check-up, repair, replacement of parts and other transportation costs;
 - damages caused by accidents of any kind (including material transfer and others);
 - operating failures resulting from applying incorrect voltage, improper usage, and unauthorized installations or repairs.
3. This warranty is invalid if:
 - the purchase invoice is modified by an unauthorized party;
 - the product is used for any commercial or industrial purposes;
 - the product is repaired or modified by unauthorized personnel, or unauthorized parts are installed;
 - the serial number is modified, damaged or removed from the product.
4. German Pool will, at its discretion, repair or replace any defective part.
5. This warranty will be void if there is any transfer of ownership from the original purchaser.

客戶服務及維修中心

香港

九龍彌敦道1-3號

九龍貨倉10樓

電話：+852 2333 6249

傳真：+852 2356 9798

電郵：repairs@germanpool.com

澳門

澳門勝利廟街145號

寶豐工業大廈3樓

電話：+853 2875 2699

傳真：+853 2875 2661

Customer Service & Repair Centre

Hong Kong

10/F, Kowloon Godwin

1-3 Kai Hing Road, Kowloon Bay,

Kowloon, Hong Kong

Tel : +852 2333 6249

Fax : +852 2356 9798

Email : repairs@germanpool.com

Macau

3/F, Edificio Industrial Pou Fung

145 Rua de Francisco Xavier Pereira,

Macau

Tel : +853 2875 2699

Fax : +853 2875 2661

GERMAN
POOL

ULTRASONIC MINI HUMIDIFIER

HUM-025



USER MANUAL

Please read these instructions and warranty information carefully before use and keep them handy for future reference.

SAFETY INSTRUCTIONS

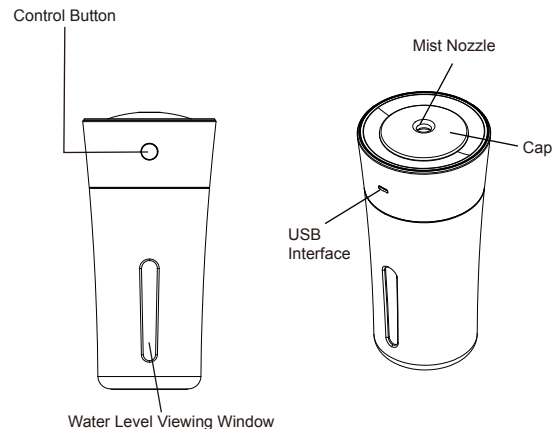


WARNING!

DO NOT add disinfectants or alcohol to the water, long term inhalation will cause respiratory burns.

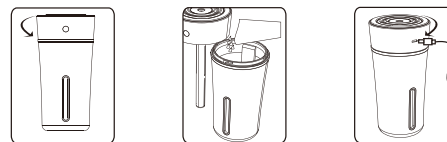
1. Please make sure there is enough water in the product before use. DO NOT run the Humidifying Function if there is insufficient water in the water cup.
2. DO NOT use aroma oils with this product as they may cause blockage to the ultrasonic atomizer. Use only water-based aromatic liquids.
3. DO NOT block the mist nozzle with finger or other objects when the product is in use.
4. This product is NOT a toy. DO NOT let children play with this product.
5. When refilling water or cleaning the product, user MUST first unplug the product from the power source.
6. This product is not equipped with dry-out automatic circuit breaker. Product will stop operating when default timer is up; if user wishes to continue using the humidifying function, must first refill water and then restart the product.


PRODUCT STRUCTURE



OPERATING INSTRUCTIONS

1. Swivel open the cap, add water to the maximum water level mark (please use distilled water, filtrated water or water-based aromatherapy liquids; DO NOT use tap water, mineral water or oil-based aromatherapy liquids). Swivel close the cap and connect to power source.



2. Press Control Button  repeatedly to cycle among Continuous Humidifying Mode→Intermittent Humidifying Mode→Turn Off Power.

Continuous Humidifying Mode	Mist will be sprayed out upright from the nozzle continuously; by default the product will automatically shut down after 8 hours
Intermittent Humidifying Mode	Mist will be sprayed out at intervals of every 3 seconds; by default the product will automatically shut down after 16 hours

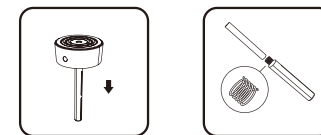
3. Long-press Control Button  for 2 seconds to turn LED Mood Light on or off.

CLEANING & MAINTENANCE

After using for a period of time, if the mist nozzle becomes blocked, please use cotton swab dipped in water/vinegar/alcohol to clean the nozzle, then wipe dry with tissue. It should then be able to function properly.

Replace Fiber Core

It is suggested to replace the fiber core every 3 months. Pull out the detachable suction tube from the cap, take out the old fiber core and insert a new one. Please be careful not to lose the spring located at the bottom of the suction tube, without the spring the product will not operate.



TECHNICAL SPECIFICATIONS

Model no.	HUM-025
Voltage	DC 5V
Power	1.5 W
Current	350 mA
Water Volume	325 ml
Mist Spraying Volume	24 ml/hr ± 5 ml
Dimensions	(H) 178 (Φ) 84 mm
Net Weight	200 g