

7種加熱組合 50°C-250°C精準控溫

超廣溫度調節範圍，輕鬆應對各種食物。智能精準控溫，配合7種加熱組合方式，讓您隨心所欲，輕而易舉獲得理想烹調效果。

7 Types of Heating with Temperature Control of 50°C - 250°C

Precise temperature adjustment for a wide variety of foods. Intelligent temperature control, combined with 7 types of heating combination, achieve your desired cooking effect.



頂部及底部發熱管

尤其適合製作蛋糕、餅乾、曲奇等，能做出金黃色完美效果。

Top and Bottom Heating Element

Suitable for baking cakes, biscuits and cookies. Perfect golden results every time.



頂部發熱管

上方溫度得以集中，適用於烘烤少量食物，例如乾果類。

Top Heating Element

The temperature above the oven is concentrated and is suitable for baking small amounts of food, such as dried fruit.



底部發熱管

焗爐從下往上加熱；可應用於慢煮或翻熱菜餚。

Bottom Heating Element

The oven is heated from bottom; it can be used for slow-cooking or reheating dishes.



燒烤功能

適用於燒烤肉類，能逼出肉類油份，烘烤效果更金黃可口。

Grill Function

Suitable for barbecue meat. Forcing oil out for a golden brown texture and a cleaner taste.



燒烤功能 + 風扇

配合風扇將熱力均勻散佈，適用於烤雞等體積較大的食物。

Grill + Fan

Grill function combined with fan, heat is distributed evenly. Perfect for roasting an entire chicken.

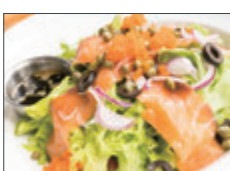


背部發熱管 + 風扇

爐內每個角落均勻受熱，適合製作蘋果批、水果蛋糕、燉蛋等甜品。

Back Heating + Fan

Every corner of the oven is gently heated. Suitable for desserts like apple pies, fruit cakes and creme brulee.



解凍

適用於快速解凍冷藏食物，將鮮味從冰封中解鎖出來。

Defrost

Quickly defrosts frozen food and unlocks its original flavors.

規格

Specifications

型號 Model	EVC-173
安裝類別 Installation Category	嵌入式 Built-In
電壓 Voltage	220 - 240 V
頻率 Frequency	50 / 60 Hz
功率 Power	2,200 W
溫度範圍 Temperature Range	50 - 250 °C
容量 Capacity	73 L
層架數量 No. of Rack Levels	5
玻璃層板數量 Glass Ply	2
機身尺寸 高x闊x深 (毫米) Product Dimensions HxWxD (mm)	(H)595 x (W)595 x (D)530
爐內尺寸 高x闊x深 (毫米) Interior Dimensions HxWxD (mm)	約 Approx. (H)380 x (W)470 x (D)408
包裝尺寸 高x闊x深 (毫米) Packing Dimensions HxWxD (mm)	(H)665 x (W)650 x (D)600
淨重 Net Weight	30.8 kg
總重連包裝 Gross Weight (w/Packing)	34.0 kg
保養年期 Warranty	一年 1 year

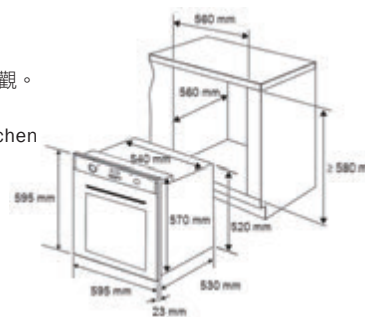
產品規格及設計如有變更，恕不另行通知。最新版本以www.germanpool.com網上版為準。
Specifications are subject to change without prior notice. Refer to www.germanpool.com for the most up-to-date version.
中英文版本如有出入，一概以中文版為準。
If there is any inconsistency or ambiguity between the English version and the Chinese version, the Chinese version shall prevail.

標準嵌入式安裝

與廚櫃完美融為一體，慳位美觀。

Built-in Installation

Blend in perfectly with the kitchen and save space.



德國寶（香港）有限公司 GERMAN POOL (HONG KONG) LIMITED

香港 Hong Kong

銅鑼灣Fashion Walk京士頓街9號
Fashion Walk, 9 Kingston Street,
Causeway Bay

+852 6530 5963
T. +852 3110 2030

+852 9387 2380
T. +852 2773 2828

土瓜灣新寶工商中心地舖
Upper G/F, Newport Centre, Tokwawan
Shop L5-5, MegaBox, Kowloon Bay

+852 9018 8648
T. +852 3907 0356

佛山市順德區大良街道五沙新翔路8號 T. +86 757 2219 6888
8 Xinxiang Road, Wusha, Daliang,
Shunde District, Foshan City

澳門 Macau

偉利廟街寶豐工業大廈3樓A室
3A, Edifício Industrial Pou Fung,
R. de Francisco Xavier Pereira

T. +853 2875 2699



更多產品資訊



版權所有。未獲本公司授權，不得翻印、複製或使用本單張作任何商業用途。
© All rights reserved. Copying, reproducing or using the contents of this leaflet is not allowed.

EVC-173-PS-21(3)

GERMAN
POOL



嵌入式焗爐

BUILT-IN OVEN | EVC-173



73^L
超大量
Extra-Large

上下發熱線
立體加熱
Top and Bottom Heating

50°C-250°C
精準控溫
Precise Temperature Control



www.germanpool.com



德國寶（香港）German Pool HK



德國寶

BUILT-IN OVEN

優雅・臻美・時尚

Elegant Beautiful and Stylish



全新德國寶嵌入式焗爐(EVC-173)，73公升超大容量與5層烹調空間，適合製作多人分量菜式。多達7種烤焗功能：上下發熱、燒烤、風扇等組合，50-250°C精準控溫，任何美食均能輕鬆處理，滋味層出不窮，新手也變身烘焙達人。

All new German Pool Built-in Oven (EVC-173), 73 liters of large capacity and 5 levels of cooking space. Up to 7 types of roasting functions: upper and lower heat, grill, fan and more. Precise temperature control of 50-250°C, even beginners can master cooking in an instant.



73公升超大容量

全新焗爐擁有超大烹調空間，73公升特大容量，能輕鬆容下大量食材。烹調派對美食，足夠多人分享！

73 Liters of Large Capacity

The new oven has a large capacity of 73 liters, making it easy to load large quantities of food. Cooking enough for an entire party!



長達10小時烹煮功能 靈活預校

超長烹調時間由1分鐘至10小時，自由調校，靈活控制食物火候。更可預約烹調時間，焗爐會自動啟動烹調程式，方便易用。

Precise 10 Hour Cooking Timer with Preset Function

The cook time can be adjusted from 1 minute to 10 hours. You can also preset cooking time and start the cooking process whenever you please.



專業設計 傑出表現

Professional Design and Unparalleled Performance

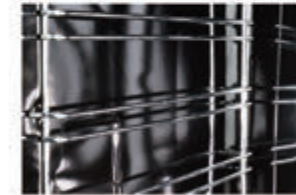


五層烹調空間 隨心調整

既可烹調較大體積食材，又能分層同時煮製多種不同食物。

Five-Levels of Cooking Space

Adjust the cooking space to your needs. It can cook large quantities of food or various smaller dishes.



易潔搪瓷爐腔

爐腔內壁為易潔搪瓷塗層，清潔焗爐更方便。

Easy to Clean Enamel Cavity

The inner wall of the oven is easy to clean with an enamel coating.

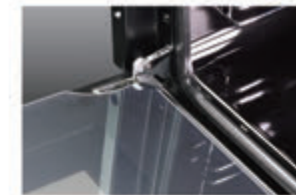


照明壁燈

照明效果清晰自然，方便透視烹調過程，隨時掌握烹調狀態。

Bright Oven Lamp

The lighting effect is clear and natural, easily watch the cooking process.



可拆卸雙層玻璃門

雙層玻璃門耐熱性佳，防燙安全。爐門還可簡易拆卸，方便清潔。

Detachable Double Layer Glass Panel Door
The oven door has strong heat resistance, it can also be easily removed for easy cleaning.

隨機配件

Accessories



不銹鋼烤架（1個）
Stainless Steel Grill Grate (1 pc)



食物烤盤（1個）
Food Deep Tray (1 pc)