

技術規格 | Product Specification

型號 Model	 HDR-WV800	 HDR-WV800-ML
顏色 Color	黑色 Black	銀紫色 Metallic Lilac
電壓 Voltage	100-240 V~	
功率 Power	800 W	
頻率 Frequency	50/60 Hz	
產品尺寸 Product Dimensions	(H) 144.5 x (W) 99.5 x (D) 40 mm	
包裝尺寸 Packing Dimensions	(H) 206 x (W) 150 x (D) 68 mm	
淨重 Net Weight	230 g (不連電源線 not incl. cord)	
總重連包裝 Gross Weight	700 g	

配件 | Accessories



德國寶風筒系列 | German Pool Hair Dryer Series



圖片只供參考。Images are for reference only.

產品規格及設計如有變更，恕不另行通知。最新版本以www.germanpool.com網上版為準。中英文版本如有出入，一概以中文版為準。

Specification is subject to change without prior notice. Refer to www.germanpool.com for the most updated version. If there is any inconsistency or ambiguity between the English version and the Chinese version, the Chinese version shall prevail.

德國寶（香港）有限公司
GERMAN POOL (HONG KONG) LIMITED

香港 Hong Kong

灣仔駱克道382號地下及1樓
G/F & 1/F, 382 Lockhart Rd, Wan Chai T. +852 6530 5963
T. +852 3110 2030

土瓜灣新寶工商中心地舖
Upper G/F, Newport Centre, Tokwawan T. +852 9387 2380
T. +852 2773 2828

九龍灣MegaBox L5-5舖
Shop L5-5, MegaBox, Kowloon Bay T. +852 9018 8648
T. +852 3907 0356

中國 China

佛山市順德區大良街道五沙新翔路8號 T. +86 757 2219 6888
8 Xinxiang Road, Wusha, Daliang,
Shunde District, Foshan City

澳門 Macau

澳門青洲大馬路(青洲新路)515號 T. +853 2875 2699
美居廣場第二期1樓A座
1 Andar A, Edif. Mei Kui Kuong Cheong
Fase 2, 515 Av. do Conselheiro Borge

更多產品資訊



© 版權所有。未獲本公司授權，不得翻印、複製或使用本單張作任何商業用途。
© All rights reserved. Copying, reproducing or using the contents of this leaflet is not allowed. HDR-WV800-ML_PS_26(1)

GERMAN POOL 

全球電壓迷你旅行風筒

HDR-WV800-ML



100-240V~
全球電壓
Universal Voltage



負離子護髮
Ionic



強勁風力
Powerful



纖巧輕盈
Lightweight



小而強勁

Mini Yet Mighty

迷你機身體積及重量與智能手機相約，極致輕巧，一手掌握，吹頭「不手軟」，置於手袋、背囊或隨身行李都輕便慳位；配備每分鐘110,000轉高速摩打，輸出源源不斷的澎湃氣流直達髮根，助您瞬間吹乾濕髮。Global Voltage Mini Travel Hair Dryer is super lightweight and about the size of your smartphone, it can slip into your handbag, backpack or hand-carry luggage, and with 110,000 rpm ultra-high speed, it dries hair in the blink of an eye.



全球電壓

Universal Voltage

您的完美旅伴！配備全智能自動調節電壓功能(100-240V~)，支援全球電壓，出差旅行毋須額外帶備變壓器；一機陪您走勻全世界，讓您無後顧之憂，在任何旅途上都能輕鬆保持最佳造型。Automatic voltage adjustment (100-240V~) supports all countries and regions, so there's no need to carry an extra voltage converter, carry it anywhere around the world, and style fancy hairdos effortlessly on every trip.

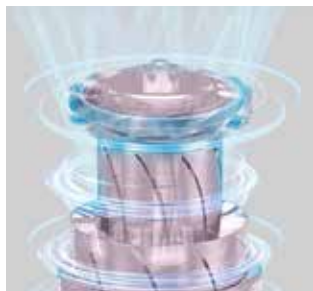


8種風速熱力組合

8 Heat & Speed Settings

高、低兩檔風速，冷、暖、熱及冷熱循環風4檔熱力選擇，依據不同造型需要自由配搭，讓您隨時隨地簡單吹出髮型屋專業造型。

With 2 wind speeds and 4 temperature settings - hot, warm, cold and alternate hot/cold, you can easily create complicated hairdos and styles.

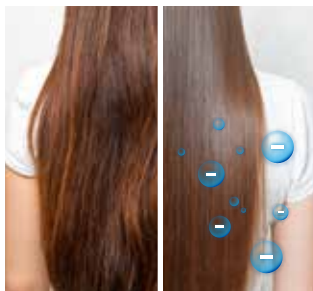


負離子呵護秀髮

Ion Conditioning Technology

吹風同時釋放高濃度負離子，有效撫平髮絲並減低毛躁，使頭髮表面水潤順滑，打造光滑強韌秀髮，全面滋潤及修護頭髮健康。

Releases high concentration ions that neutralize positive charge, effectively reducing frizz and smoothing hair cuticles to create a shiny appearance.

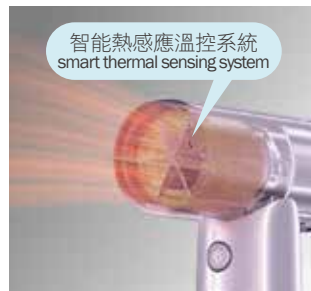


智能溫控保護髮絲

Smart Temperature Control

內置智能熱感應溫控系統，持續監測發熱元件狀態，確保出風溫度穩定，防止髮絲過熱損傷，絕對是長髮恩物。

Equipped with smart thermal sensing system, ensuring stable airflow temperature to prevent overheating damaging your hair, perfect for drying long hair.



反向噴射式除塵

Reverse Jet Dust Removal

配備過濾網及防塵蓋阻隔塵埃同時避免頭髮捲入；反向噴射式除塵功能高效清除聚積於摩打蓋上的污垢，風筒更經久耐用。

Filter and dust cover block dust and prevent hair from getting caught; unique reverse jet dust removal function blows dust out the back to efficiently clear any debris.

